



CHATTERTON | REES

Hanover Gate Mansions Park Road

, London, NW1 4SJ

£5,500 Per month



Hanover Gate Mansions Park Road



Description

This spacious 1,400 sq. ft. lateral apartment is located on the top floor of a building with lift access, just a short walk from Regent's Park.

The property features a large reception room with a private balcony and a separate galley kitchen equipped with high-quality appliances. There are four bedrooms in total: two large doubles with en-suite bathrooms, and two additional bedrooms served by a shared family bathroom.

The apartment is ideally situated for access to local amenities in Marylebone and St John's Wood. Baker Street Station is within easy walking distance, offering excellent transport links across London.

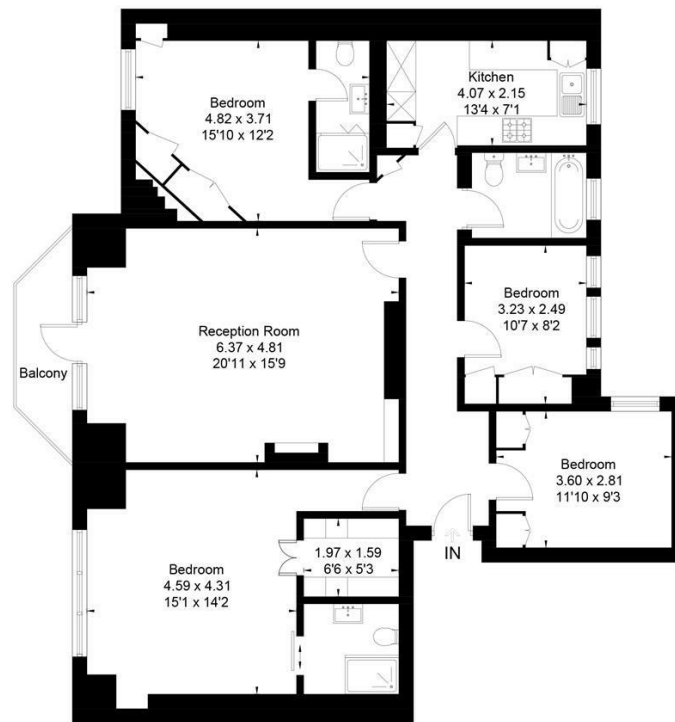
Available now
Furnished as seen





Floor Plan

Approximate Floor Area = 126.5 sq m / 1362 sq ft

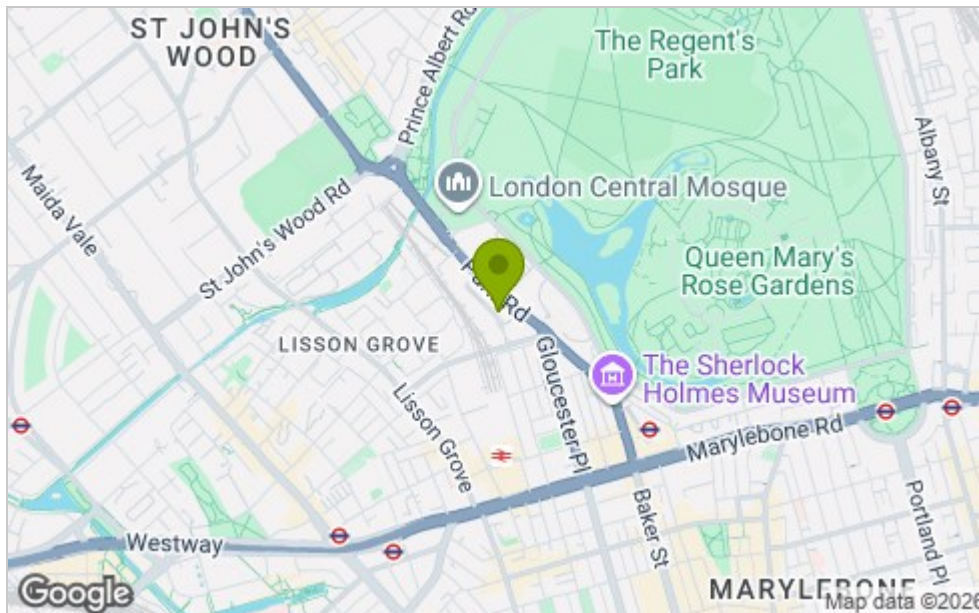


Fourth Floor



This floor plan has been drawn in accordance with RICS Property Measurement 2nd edition. All measurements, including the floor area, are approximate and for illustrative purposes only. @fourwalls-group.com #107065

Area Map



Viewing

Please contact our Chatterton Rees Office on 020 3780 0580 if you wish to arrange a viewing appointment for this property or require further information.

These particulars, whilst believed to be accurate are set out as a general outline only for guidance and do not constitute any part of an offer or contract. Intending purchasers should not rely on them as statements of representation of fact, but must satisfy themselves by inspection or otherwise as to their accuracy. No person in this firm's employment has the authority to make or give any representation or warranty in respect of the property.

Energy Efficiency Graph

